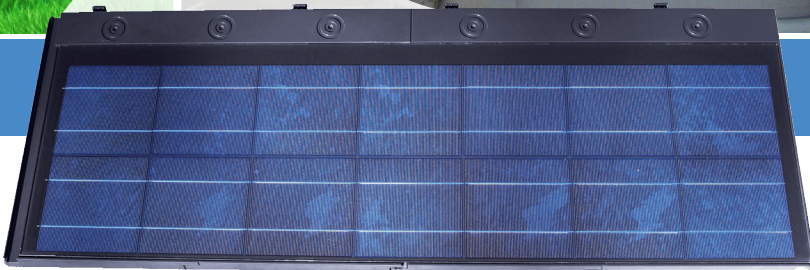


# SUN ENERGY TILES



## PV SOLAR ROOF TILES

Innovative Tile Products for Residential, Commercial and Industrial Applications.

## SUPERIOR DESIGNED TILE FOR MORE EFFICIENT ENERGY



## SUN ENERGY TILES

This roofing tile is a unique product that maintains the natural look of your property while generating clean, safe and efficient energy from the sun. The tiles are specifically designed for residential and commercial sloped roofs of various designs.



# SUNENERGYTILES

Patent Pending



## BENEFITS AND FEATURES

- **SAFE, SNAP CONNECTORS**
- **TEMPERED GLASS**
- **TOUGH COMPOSITE BASE CAN BE WALKED ON**
- **HIGH POWERED CRYSTALLINE SOLAR CELLS**
- **TILE BASE ALIGNS WITH STANDARD CONCRETE TILE**

## SE TILE SPECIFICATIONS

**EXPOSED AREA:**  
47 inches x 13.5 inches

**TILES PER ROOFING SQUARE:**  
23

**WEIGHT:**  
14 lbs. per tile, 35 lbs. per square foot

**FIRE RATING:**  
Class A

**COLORS:**  
Slate Gray and Terra Brown  
Custom Colors Available Upon Request

**POWER:**  
42 Watts Terra Brown • 52 Watts Slate Gray

**CERTIFICATIONS:**  
SE Tile complies with UL 1703, UL 790

**WIND LOAD RATING:**  
90 mph

## SUNENERGYTILES

- Aesthetic Design
- Cost-Effective
- Clean Power
- 25-Year Warranty\*

